

BENTSAI

PRTFOX

Product instructions

PRTFOX Dwfault name:

PRTFOX-xxxxxxx
(product serial number)

PRTFOX default password:

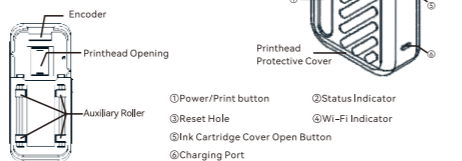
12345678



Please scan the QR code on the bottom cover to download the app before use.

1 Power On / Off

Press and hold the power button on the side of the printer for about 1 second. The indicator light will turn on and change from white to green, indicating the printer is ready for use.



2 Installing and Removing the Ink Cartridge

1. Press the cartridge-cover release button to open the cartridge compartment (indicator turns red).

2. Insert the ink cartridge at an angle as shown.



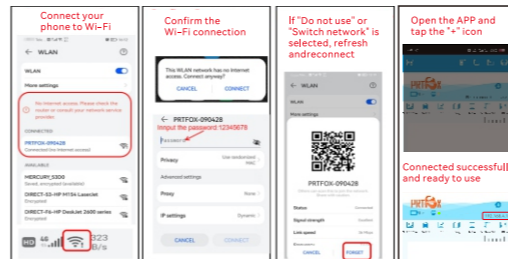
3. Align the cartridge with the Printhead opening and push it in until fully seated.

4. Close the cartridge cover, the indicator light will turn green again.

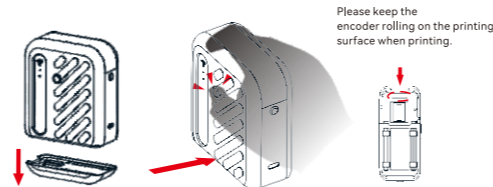


3 Printing Steps

1. Scan the QR code in the manual to download and install the APP.
2. Turn on your phone's Wi-Fi and select "PRTFOX-XXXXXX (Serial Number)". Enter the default password: 12345678.
3. Open the APP, enter and edit the content to be printed.
4. Tap the printer icon in the upper-right corner of the APP editing interface to send the print command.



5. Open the bottom printhead protective cover.
6. Press the print (power) button.
7. Place the printhead on the printing surface and slide the printer smoothly at a constant speed.
8. If broken lines or blank gaps appear during printing, gently wipe the surface of the Printhead with a lint-free cloth moistened with 95% alcohol.



4 Status Indicator

Status	Indicator Color
Power On	White Steady
Standby	Green Steady
Printing	Blue Steady
Cancel Printing	Green Flashing
Cartridge Missing	Red Steady
Protection Mode	Red Flashing
Low Battery	Red Flashing
Firmware Upgrading	Yellow Steady
Firmware Upgrading Failed	Pink Steady
Wi-Fi Not Connected	Blue Steady
Wi-Fi Connected	Green Steady

5 Charging function

This printer uses a Type-C charging port with a 5V-1A input. The indicator light turns red during charging (when powered off) and turns off when fully charged.



6 Printer maintenance

1. If the printer is not used for 10 minutes, cover the printhead with the protective cap.

2. If unused for more than 10 minutes, remove the ink cartridge and attach the cartridge clip.



6 Printer maintenance

3. Do not wipe the inside of the device with a wet cloth.
4. If ink accidentally enters the eyes, rinse with plenty of water and seek medical attention immediately.



7 Packing List

NO.	Item	Quantity
1	Mini InkJet Printer	1pc
2	Ink Cartridges	1pc
3	Power Cable	1pc

8 Warranty Provisions

1. This product follows the warranty policy with a one-year warranty (based on invoice date).
2. If failure occurs due to material or manufacturing defects under normal use, free repair or replacement will be provided.
3. Consumables such as ink cartridges and power cables are not covered by the warranty.

9 Disclaimer

The warranty does not cover the following:

- Damage caused by improper transportation, use, storage, or maintenance
- Unauthorized repair or disassembly
- Damage caused by nonoriginal accessories
- Missing or altered proof of purchase
- Expired warranty period
- Damage caused by force majeure